

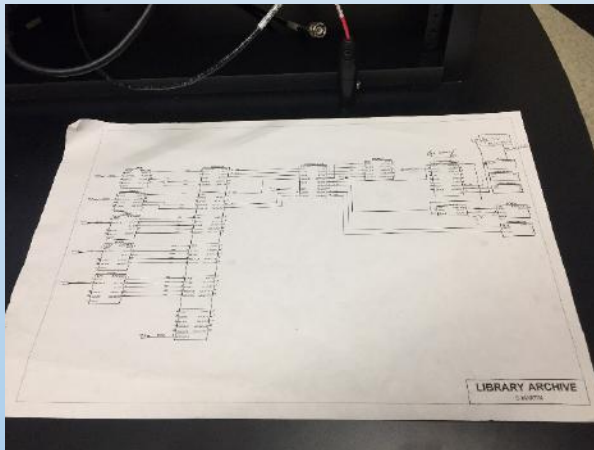
SEAPAVAA 2017

Video Lab
Media Preservation Unit

University of Illinois at Urbana-Champaign

Putting it together...

MARCH 2016



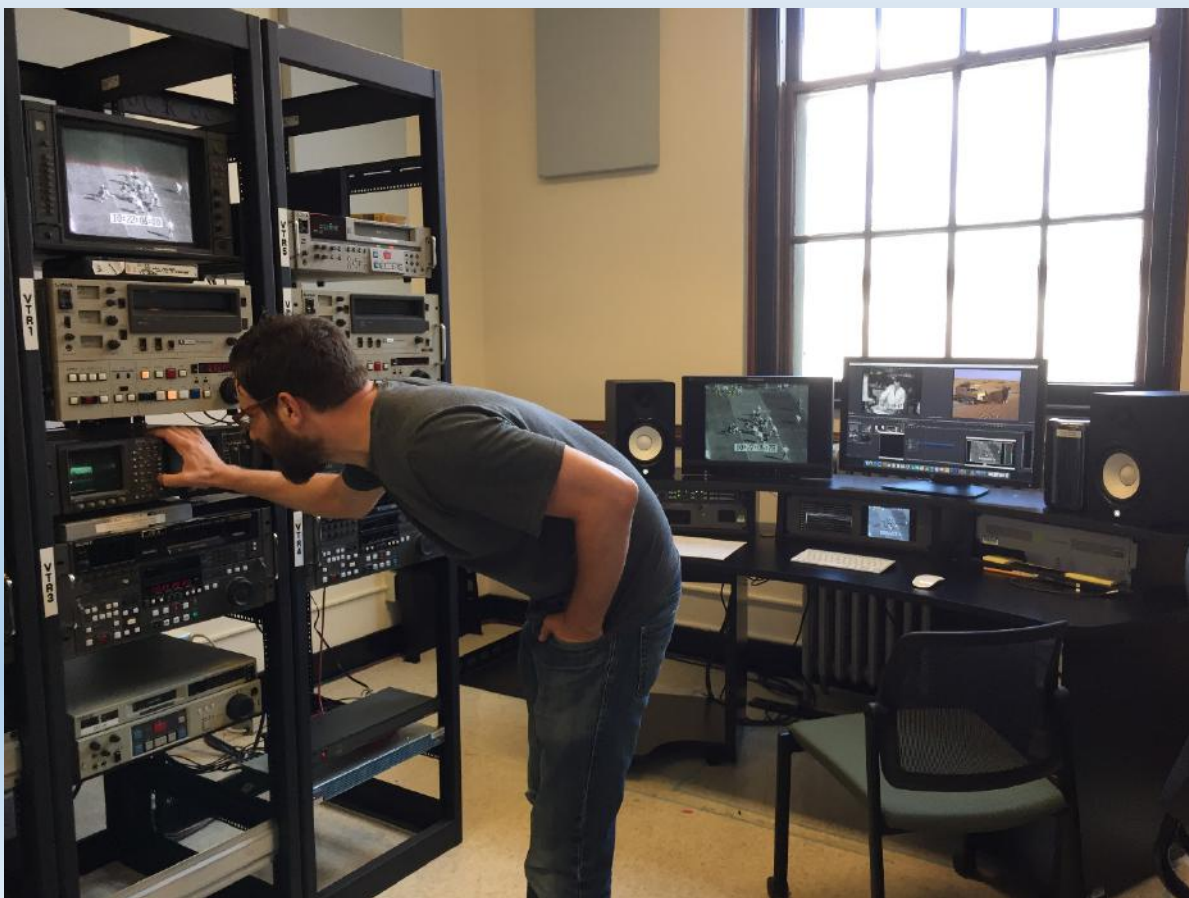
...it takes time...



April 2016



June 2016



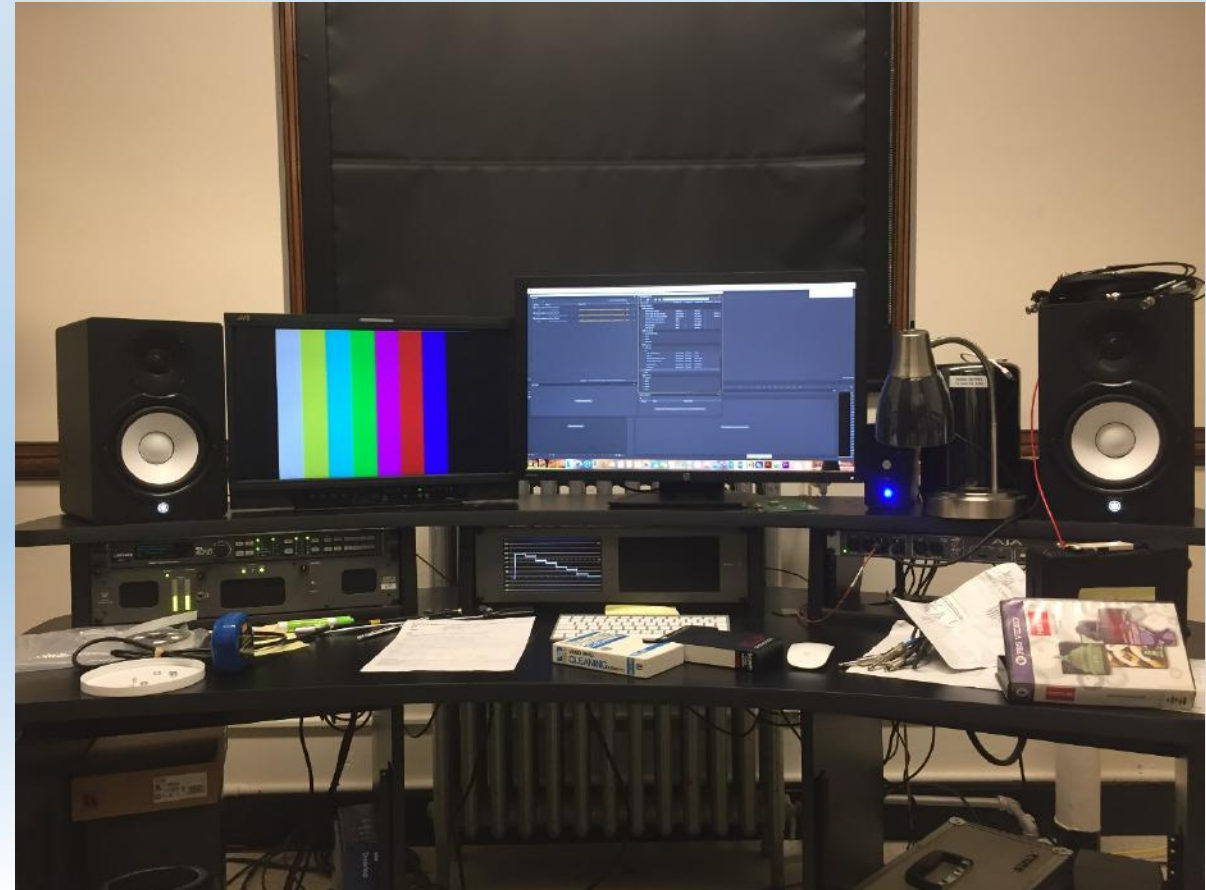
December 2016

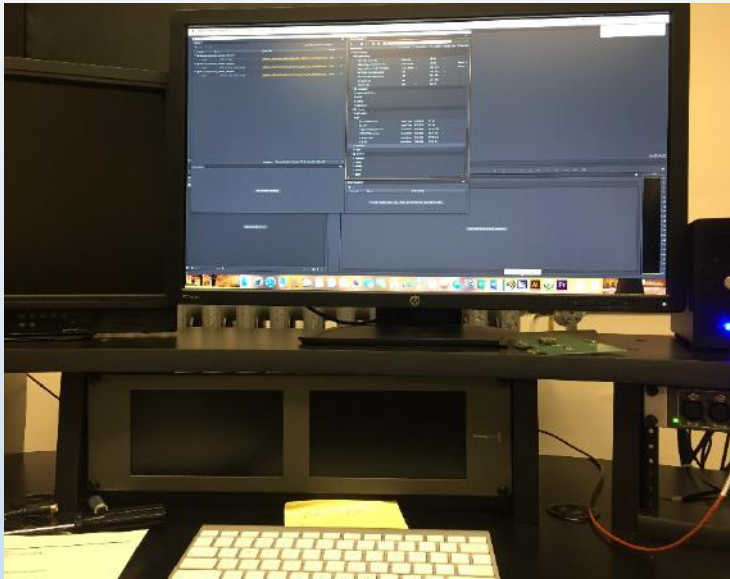


March 2017



The Console



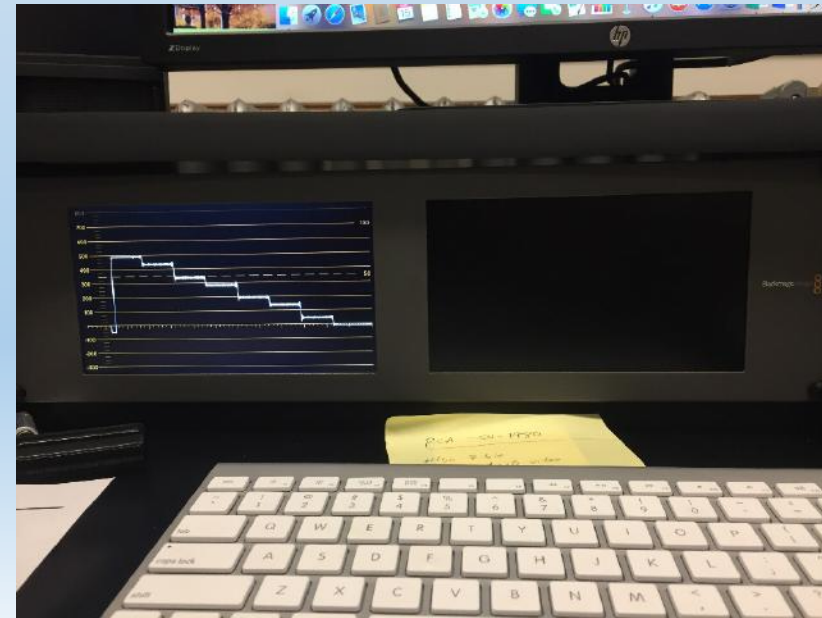


Digitization Software as seen on
Computer Monitor



Capture Card (left), Speaker (right) &
Input/Output/Routing Device (bottom)

Speaker (left),
Video Monitor
(Right), Time-
Based Corrector
a. k. a Frame
Synchronizer
(bottom)

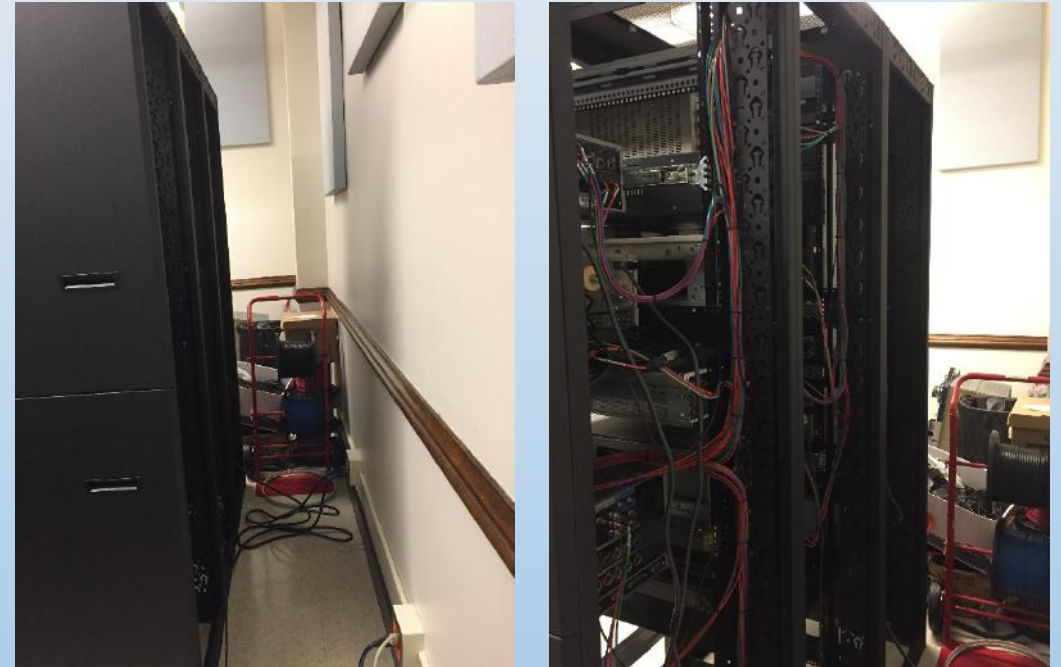


Black Magic
Duo Monitor

The Decks



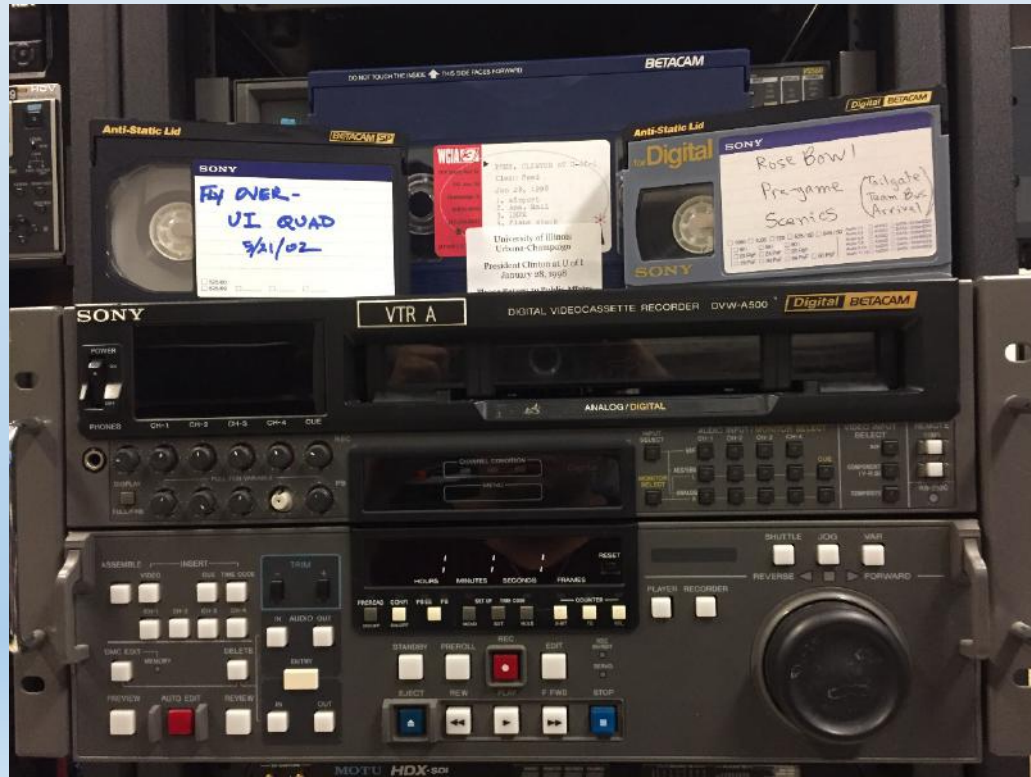
Front



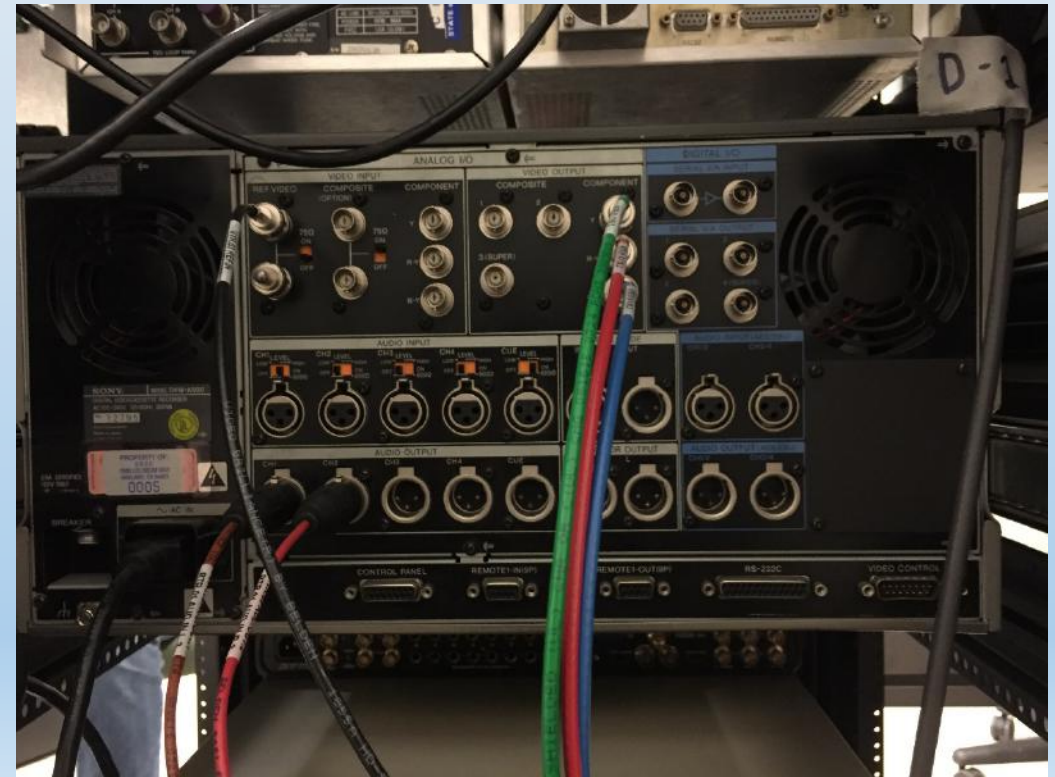
Back

Digital Betacam Deck: Plays Betacam, BetacamSP* & Digital Betacam Videotapes

Front



Back



DOES NOT PLAY BETAMAX!

Betamax Deck



Front



Back

*BetacamSP Deck



3/4" U-Matic Deck

Front

Back

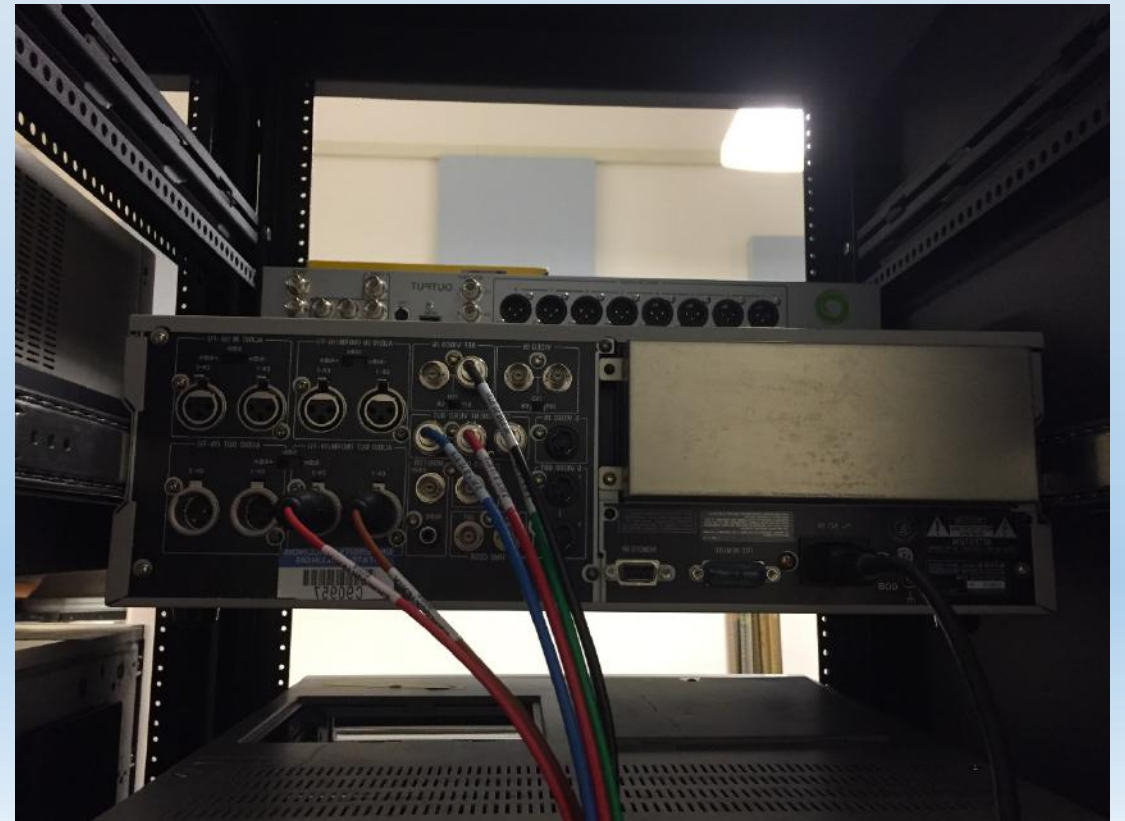


VHS Deck

Front



Back



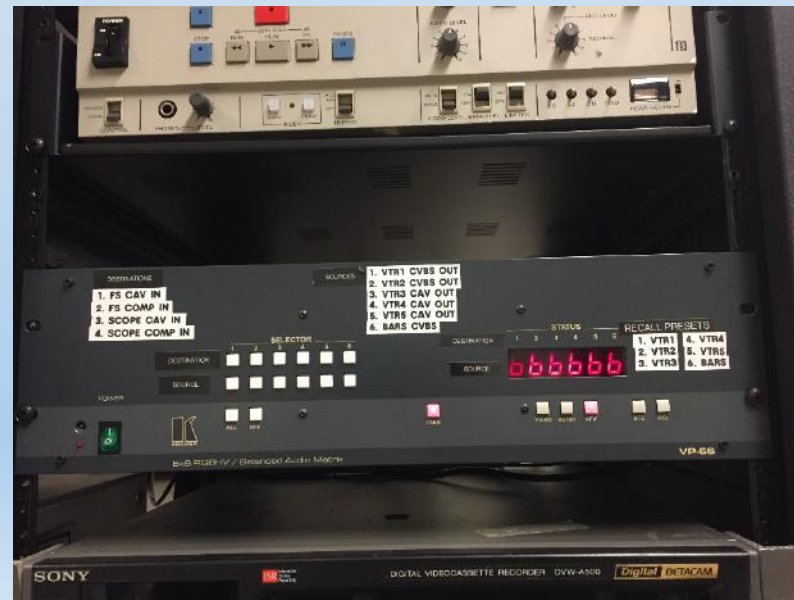
Other necessities...



Waveform Monitor (left) & Vectorscope (right)



Video Monitor



Router



Black Burst/Color Bar Generator
(top)

What else can be found in a video lab?

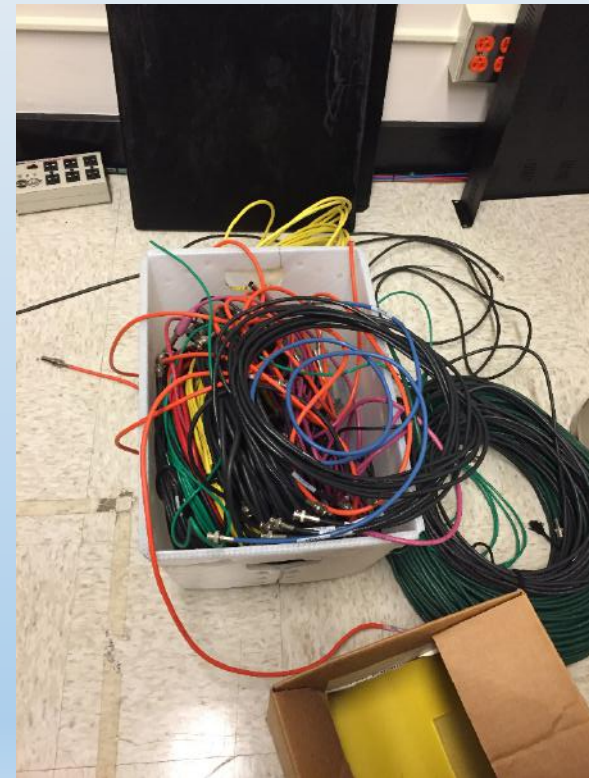


Work Station

Patron Viewing Station



And...



(You've got to put it together somehow.)

Never hurts to have extra equipment!



Let's Digitize!

Testing the equipment and playing with settings: VHS



The Real Deal

